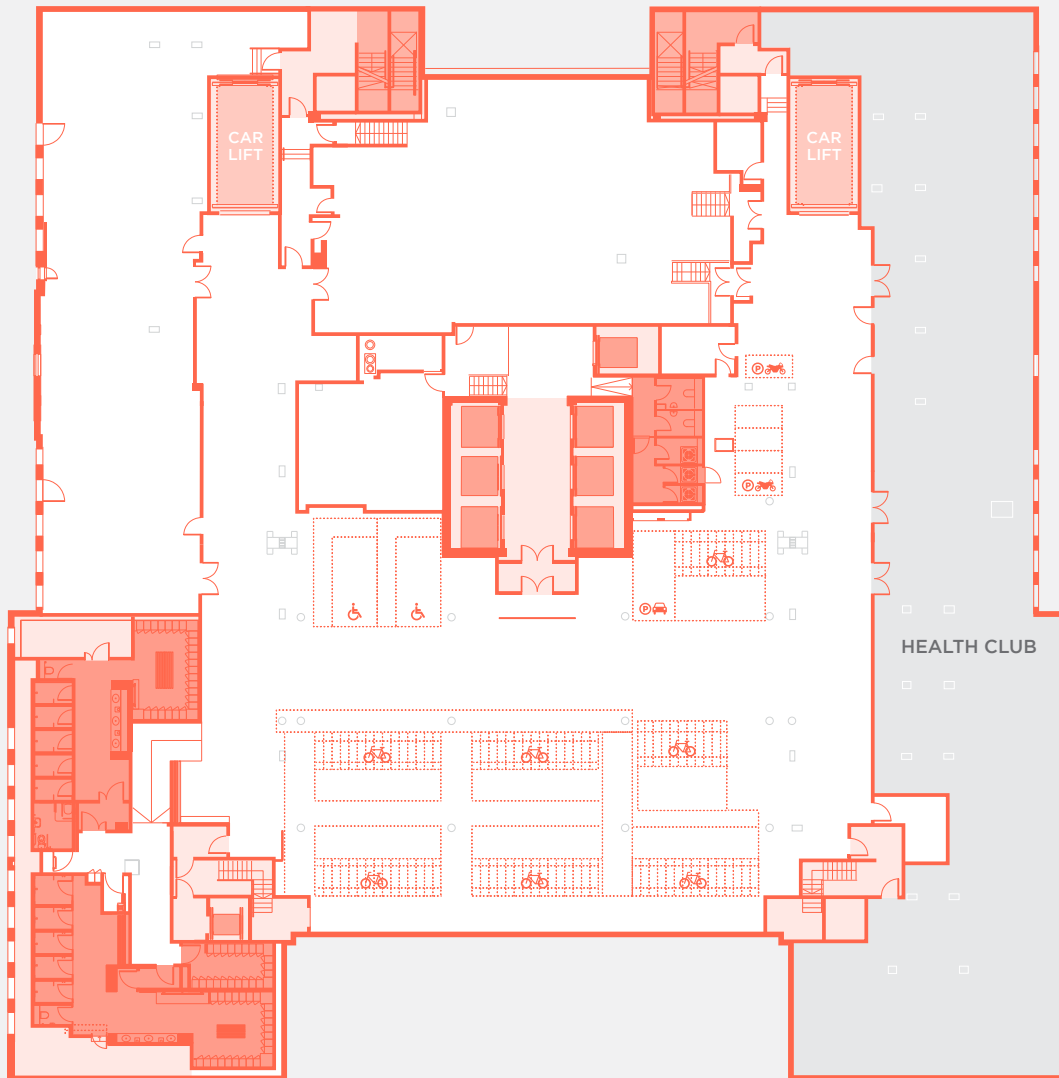


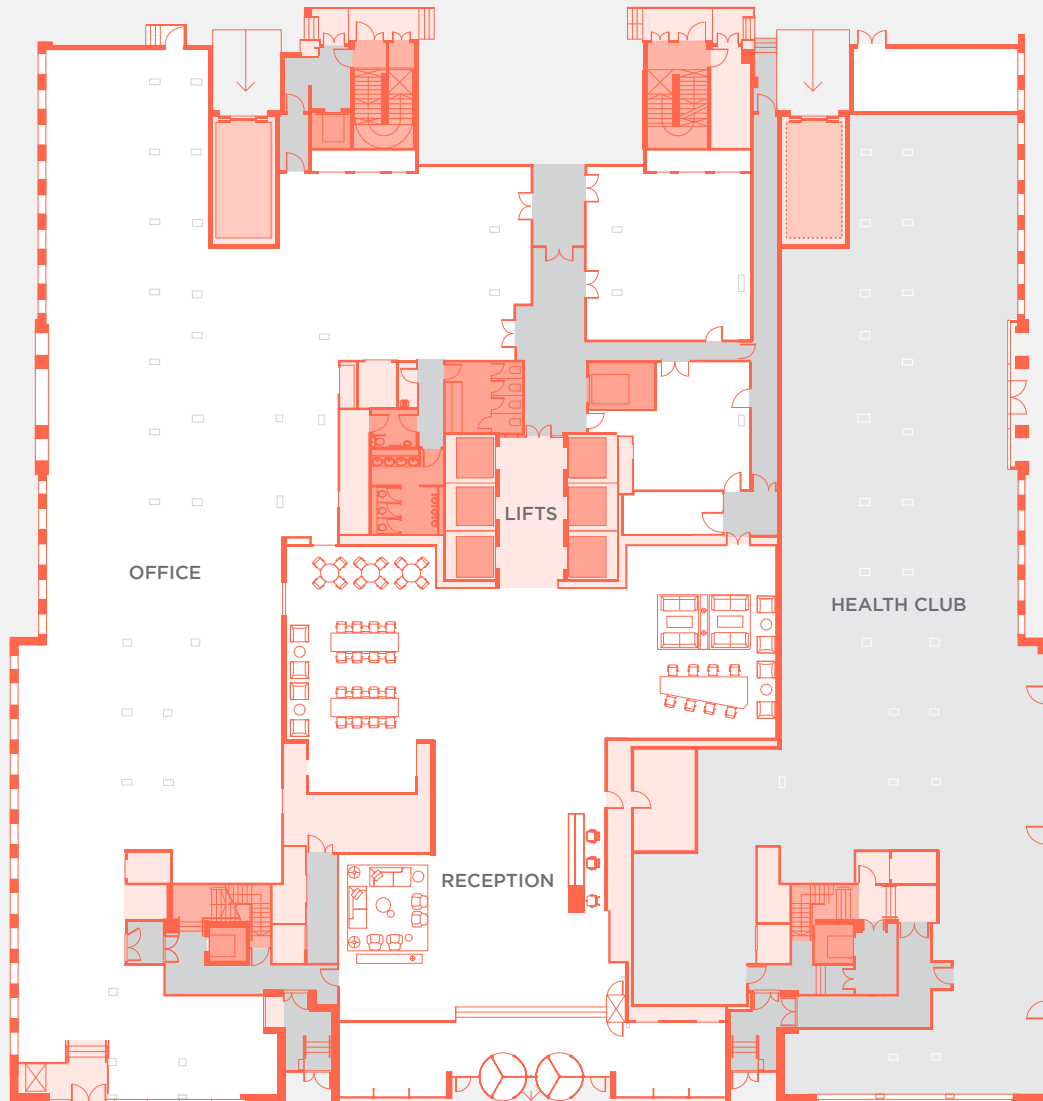
## LOWER GROUND



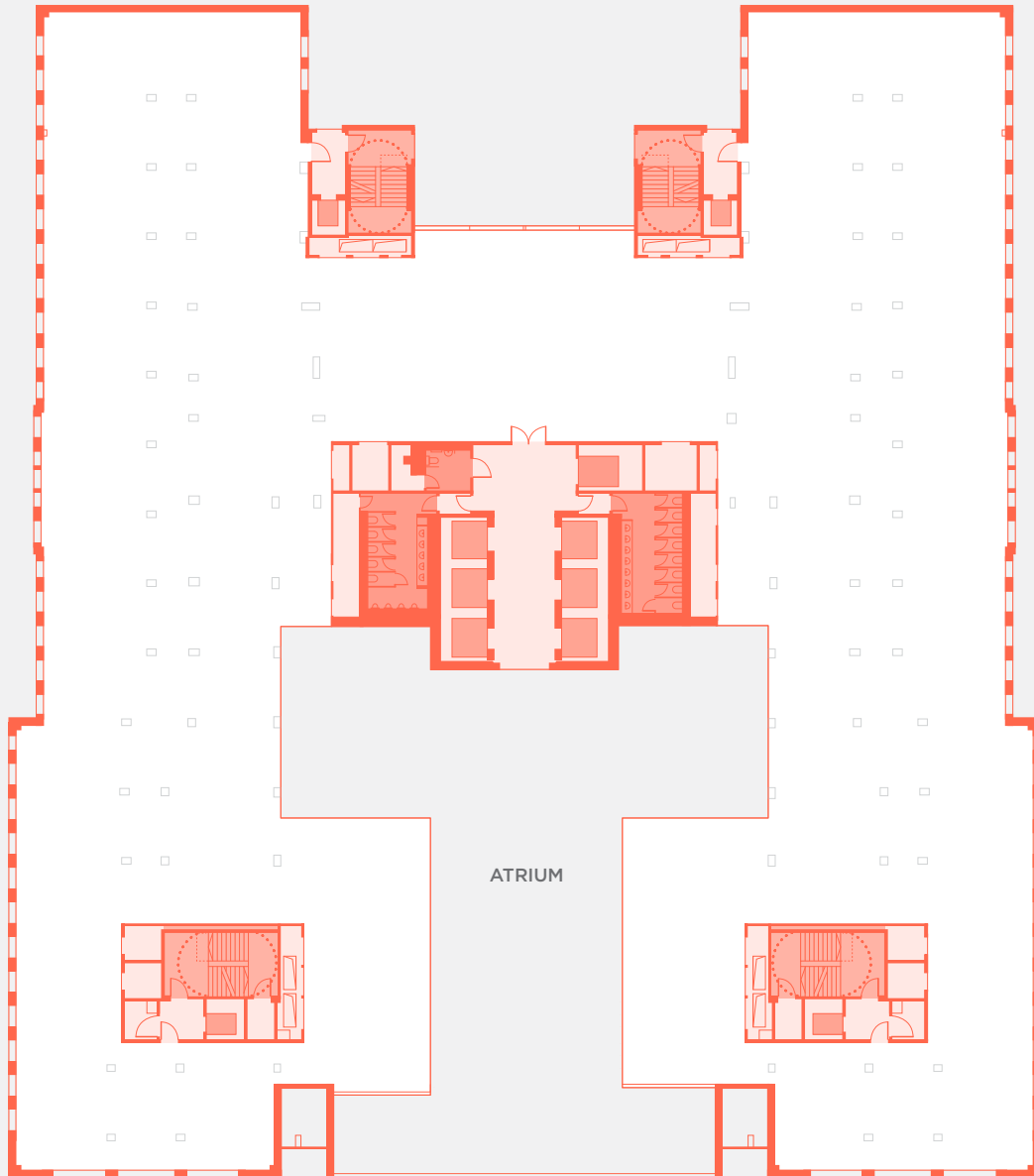
- |   |                             |     |  |
|---|-----------------------------|-----|--|
| 1 | Standard car space          | 202 | Bike rack spaces                               |
| 2 | Fully accessible car spaces | 14  | Showers  |
| 5 | Motorbike spaces            | 8   | Brompton bikes available as a building amenity |



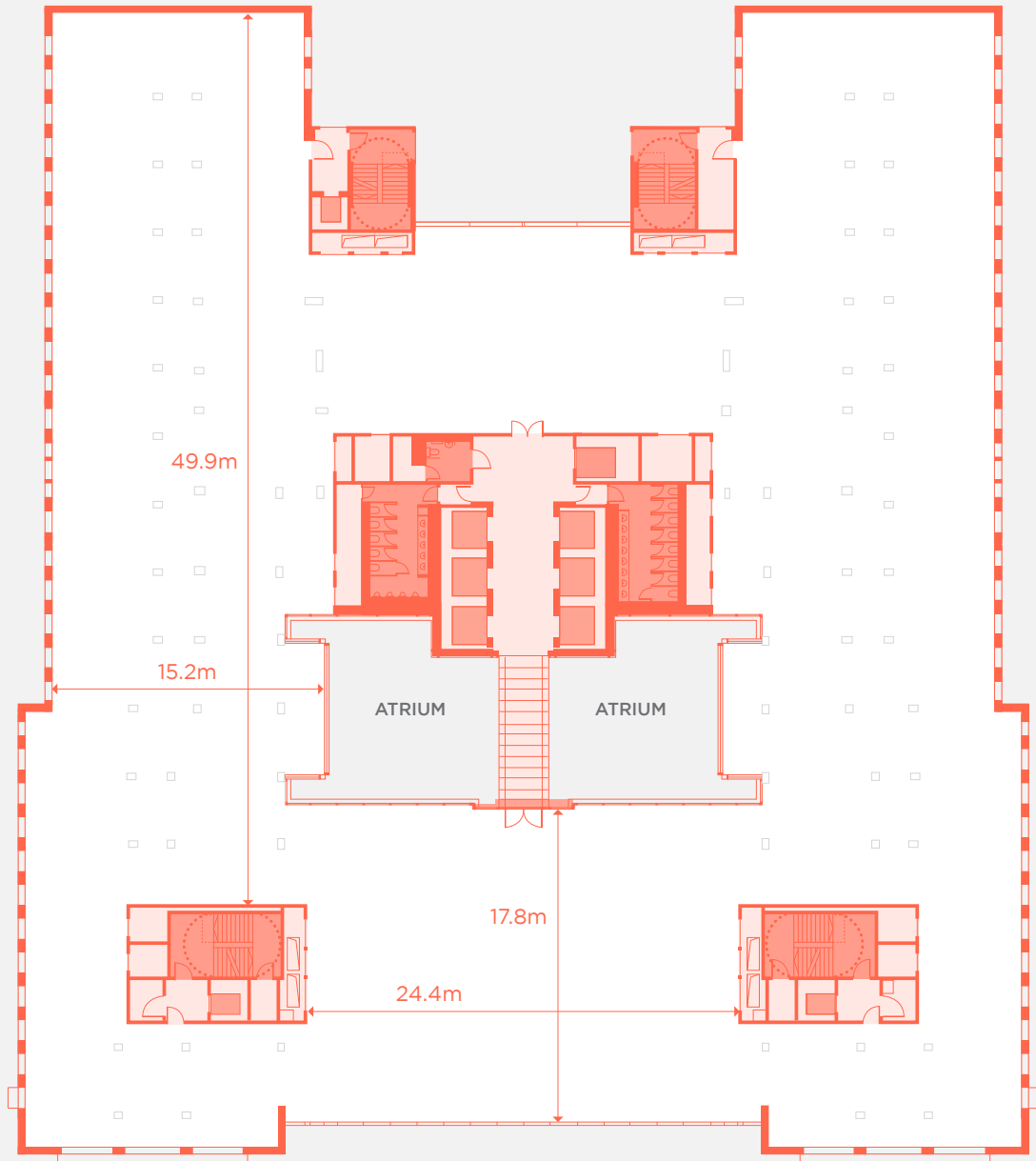
GROUND FLOOR



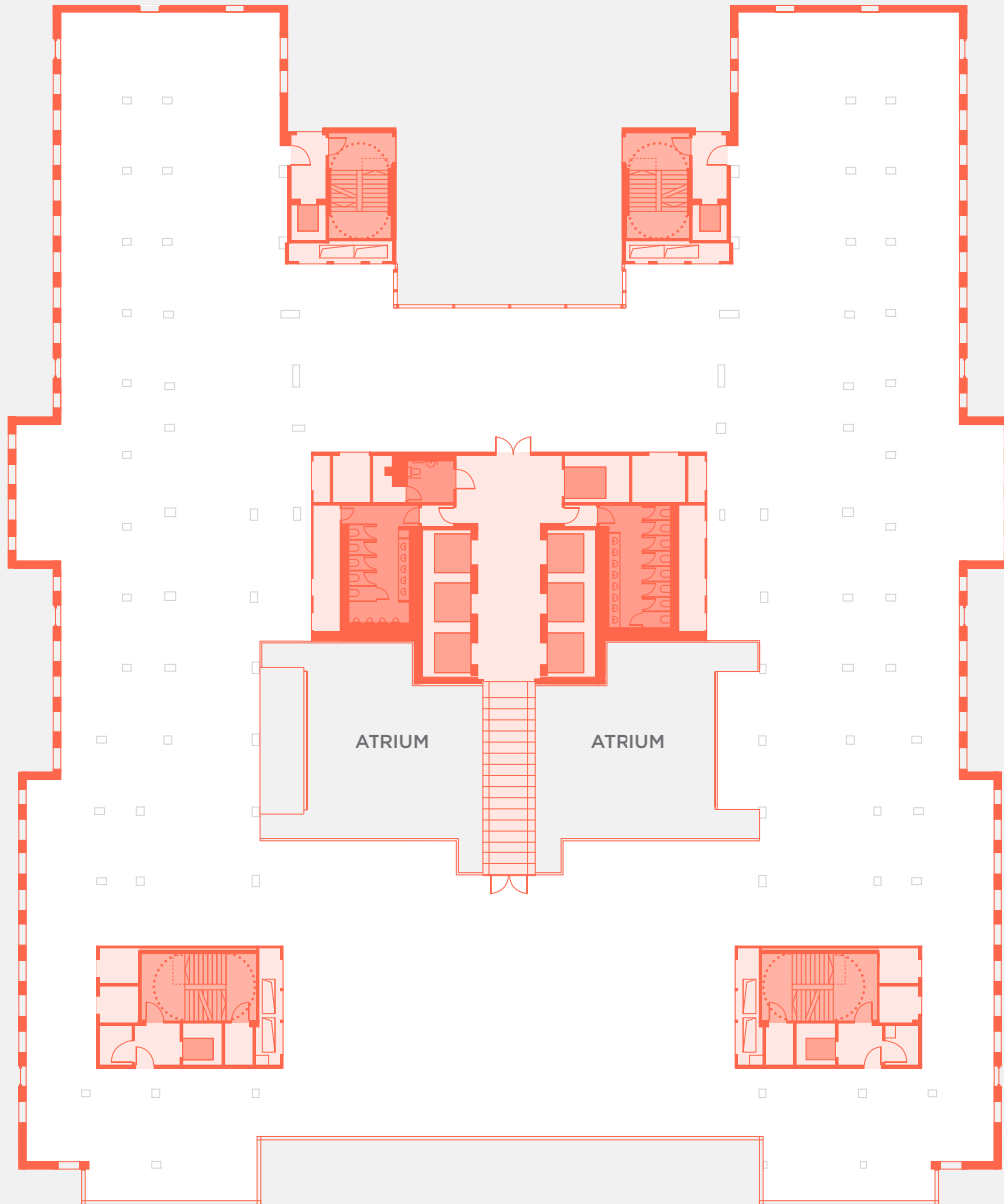
FIRST FLOOR



TYPICAL UPPER (FLOORS 2-6)



SEVENTH FLOOR



EIGHTH FLOOR

